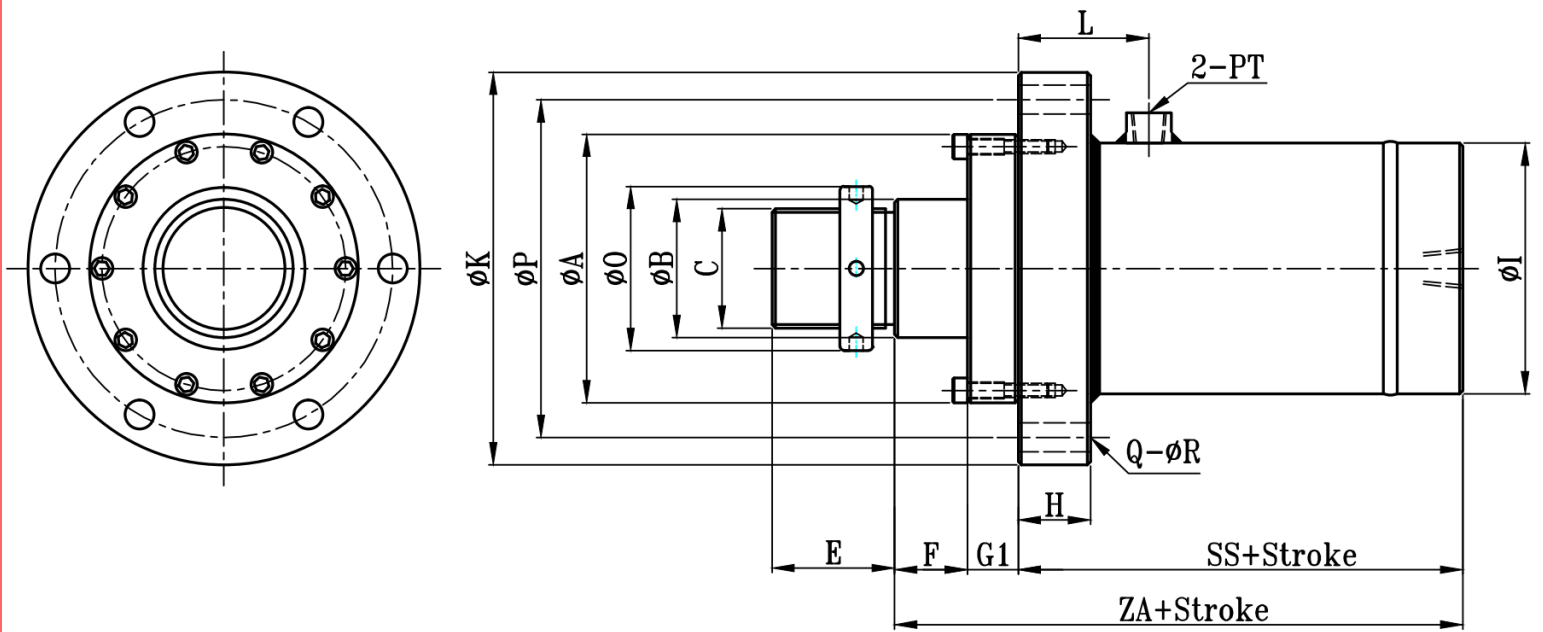
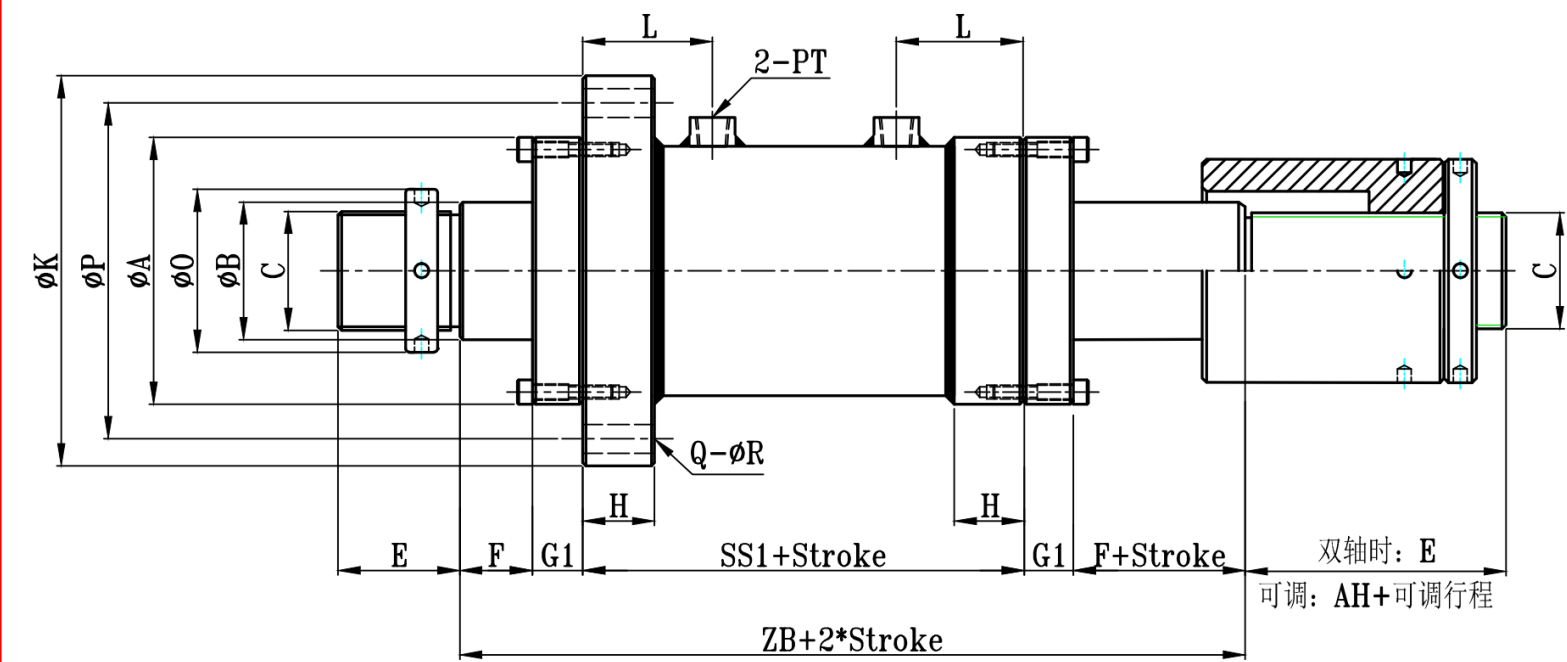


HROB:HROB+FA(前法兰板型) TYPE

大型高压圆油压缸尺寸图 21Mpa HRO Series Dimensional Features



HROD:HROBD+FA(双轴前法兰板型) TYPE



HROB-HROD-FA TYPE

缸径 BORE	$\phi A$	$\phi B$	C	L	H	$\phi I$	$\phi K$	$\phi P$	$\phi O$	E	F	G1	SS	SS1	ZA	ZB	AH	Q	$\phi R$	PT
$\phi 125$	170	60	M50xP2.0	65	34	145	240	205	65	60	25	25	175	200	225	300	50	6	18	3/4
$\phi 140$	190	70	M60xP2.0	75	39	165	270	230	80	70	25	30	205	220	260	330	60	6	20	3/4
$\phi 150$	200	80	M70xP2.0	75	39	180	280	240	100	80	25	30	205	230	260	390	60	6	20	1
$\phi 160$	210	80	M70xP2.0	75	39	190	290	250	100	80	30	30	205	230	265	350	60	6	20	1
$\phi 180$	235	100	M90xP2.0	85	44	210	315	275	120	100	30	35	225	250	290	380	60	8	20	1 1/4
$\phi 200$	260	120	M100xP3.0	95	49	235	340	300	130	110	30	35	255	280	320	410	65	8	22	1 1/4
$\phi 220$	290	140	M120xP3.0	95	49	260	380	335	150	130	30	40	255	290	325	430	70	8	24	1 1/4
$\phi 250$	325	160	M140xP3.0	100	54	299	430	380	180	150	30	40	270	300	340	440	75	8	26	1 1/4
$\phi 280$	360	180	M160xP3.0	110	59	325	470	420	200	160	30	45	275	320	350	470	80	10	26	1 1/2
$\phi 300$	385	200	M180xP3.0	115	64	351	510	450	220	160	35	45	280	330	360	490	90	10	29	1 1/2
$\phi 320$	410	220	M200xP3.0	120	69	377	540	490	240	180	35	50	285	340	370	510	95	10	29	1 1/2
$\phi 350$	440	250	M220xP3.0	125	74	420	590	530	260	180	35	50	290	350	375	520	100	12	32	1 1/2
$\phi 400$	490	300	M280xP3.0	130	79	480	630	570	320	180	35	50	295	360	380	530	110	14	32	1 1/2